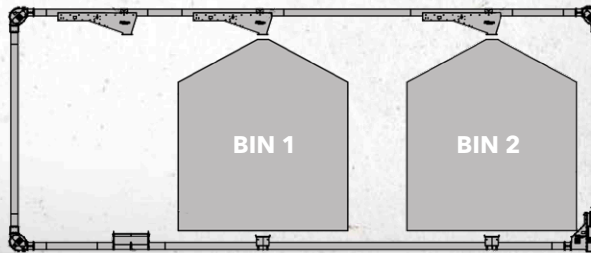


# LOOP CONVEYOR

**MODULAR DESIGN**  
8", 10" AND 12"  
DIAMETER SYSTEMS  
AVAILABLE

Versatile closed-loop design for a complete load-in/load out system.



TYPICAL LAYOUT - EASILY CONFIGURED FOR YOUR NEEDS

Ultra High Molecular Weight (UHMW) paddle keeps grain flowing gently and evenly from inlet to discharge source



**PADDLES**  
Paddles create less grain damage than traditional auger flighted conveying systems

Picture shows a condensed show unit, some details will be different on production units.

**Sudenga**

## CAPACITIES TO 10,000 BPH

(281 TPH USING 45# CU. FT. MATERIAL)

**DURABLE | LOW HORSEPOWER CONSUMPTION | GREAT CAPACITY**



INSPECTION SECTION

The Loop Conveyors from Sudenga can be used to fill and empty grain bins, flat storage structures or in feed processing and conveying applications.



# LOOP CONVEYOR SYSTEMS

## STANDARD FEATURES

- Totally modular
- Available in 8", 10" and 12" diameter systems
- Galvanized outer tubes standard if supplied by Sudenga
- Standard and optional heavier gauge tubes available
- Dodge gear reducers
- Inlet hoppers, grated inlet hoppers, flow-thru bypass inlets, manual and electric intermediate discharges

## OPTIONAL FEATURES

- Truss kits, stands, inspection sections
- A complete line of Loop Conveyor tower and catwalk is available.

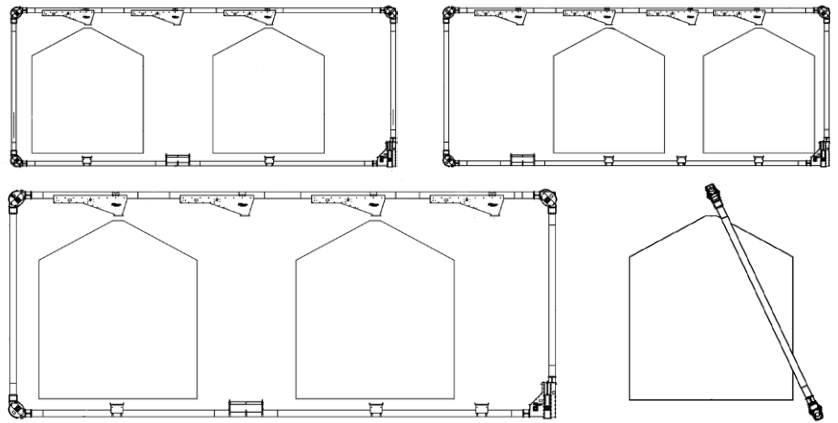


SUDENGA TOWER AND CATWALK



## CUSTOMIZABLE

Multiple sizes and configurations available for nearly endless customization possibilities



## LOOP CONVEYOR SPECIFICATIONS

	8" LOOP	10" LOOP	12" LOOP
<b>Conveying Tube Dimension</b>	8" diameter (20.3 cm)	10" diameter (25.4 cm)	12" diameter (30.5 cm)
<b>Maximum Capacity*</b>	4,000 BPH (112 TPH*)	6,000 BPH (169 TPH*)	10,000 BPH (281 TPH*)
<b>Chain Travel</b>	325 FPM	325 FPM	400 FPM
<b>Head Shaft RPM</b>	99 RPM	88 RPM	80 RPM
<b>Tube Gauge Galvanized</b>	14 gauge	12 gauge	10 gauge
<b>Paddle Thickness</b>	1/2"	1/2"	1/2"
<b>Corner Shaft Diameter</b>	2-7/16"	2-7/16"	3-7/16"
<b>Conveyor Chain</b>	D81XHH	D81XHH	D81XHH
<b>Conveyor Sprocket</b>	15 tooth	17 tooth	23 tooth

\*Capacity in TPH using 45# cu. ft. material

**Sudenga**  
INDUSTRIES, INC.

1-888-SUDENGA | 1-712-475-3301 | Fax: 1-712-475-3320  
PO Box 8, 2002 Kingbird Ave., George, IA 51237 USA  
sales@sudenga.com | www.sudenga.com