

Sudenga
INDUSTRIES, INC.

MICRO SKID CMS-2000



**ONLY
NTEP LAB
CERTIFIED**
GAIN-IN-WEIGHT
SYSTEM IN THE
COUNTRY

**EASY INTEGRATION WITH
EXISTING FEED MILL SYSTEMS**

COST EFFECTIVE SOLUTIONS FOR MICRO INGREDIENT MANAGEMENT

www.sudenga.com

COMMERCIAL MICRO SKID CMS-2000



LOADCELLS

Sudenga's commercial micro skids feature four NTEP approved loadcells for accurate weighing.



MICRO HOPPER DRIVE ASSEMBLY

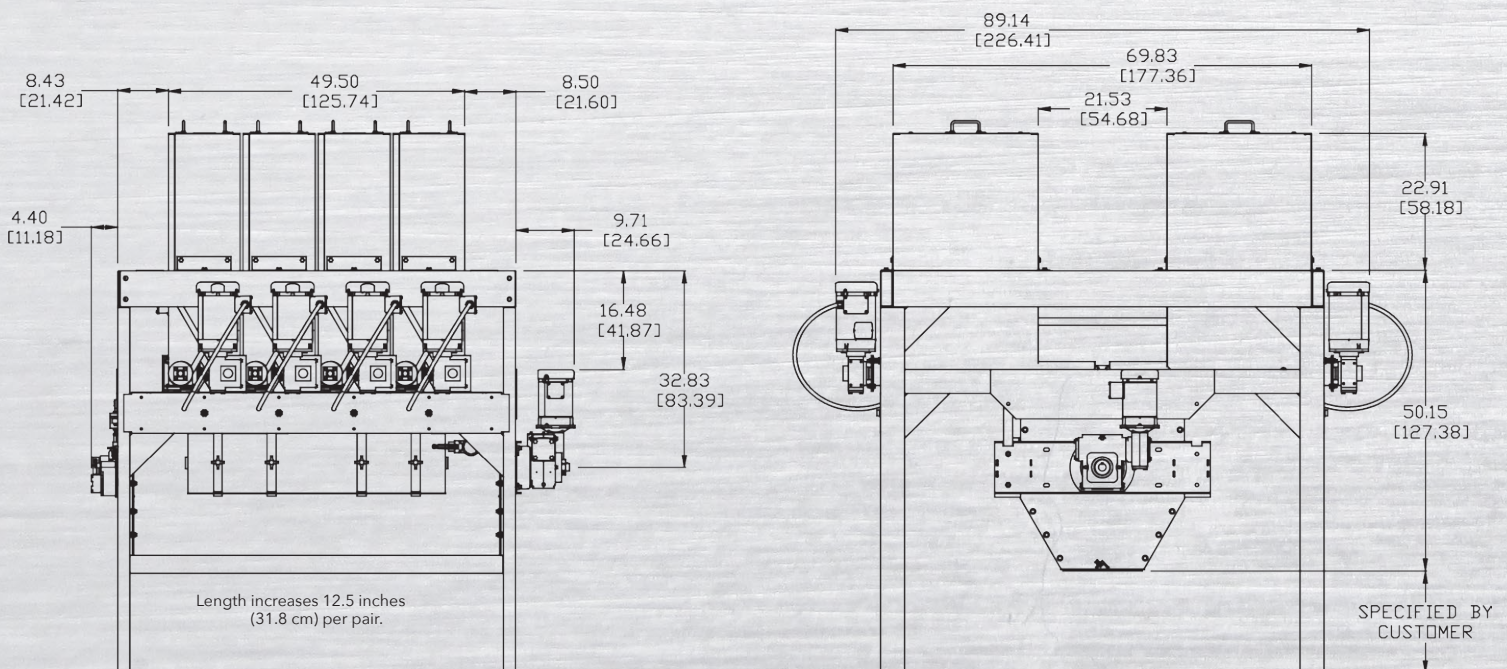
Robust right angle gearbox/motor assembly can be rotated in either the up or down position. With four bolts the auger, gearbox, and motor can easily be removed. The gearbox/motor assembly is available in a variety of motor HP's and gearbox ratio's to fit your needs.



FLUSH HOPPER

Allows the feedmill operator to flush the micro transfer conveyor after each batch or formulation. Butterfly discharge gate available in electric or pneumatic controls.

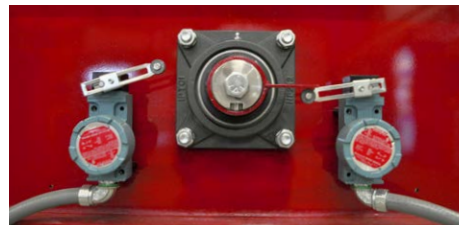
SPECIFICATIONS



20" ROTATING DRUM ABOVE FLOOR INSTALLATION



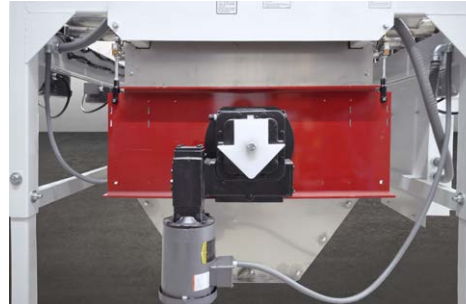
LARGE ACCESS DOORS
The large access doors allow for easy access for rotating drum inspection.



ROTATIONAL LIMIT SWITCHES
Ensure proper position feedback to the batch controller.



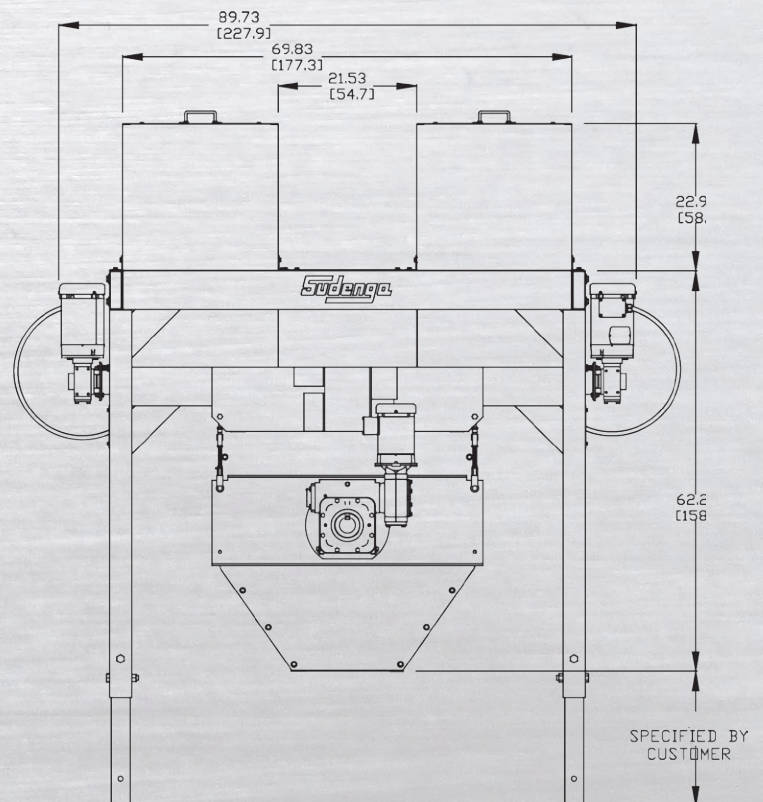
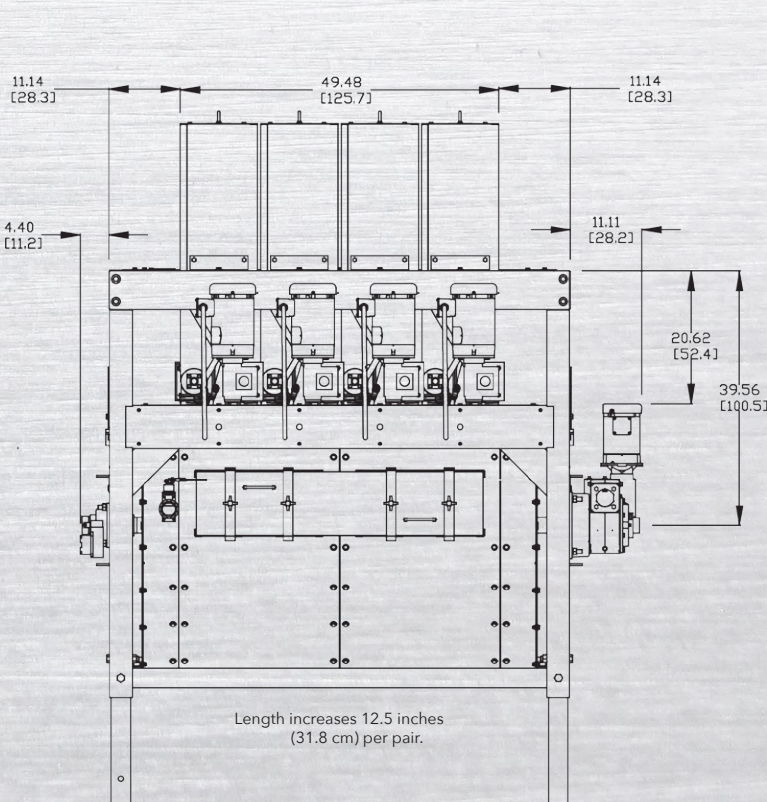
MOTOR CONTROL PANEL
The motor control panel with VFD controls allows for each hopper to be set to an individual high and an individual low speed setting through the batching control panel.



ELECTRIC ROTATING DRUM
The gearbox/ electric motor drive assembly is much smoother and more reliable than the tradition pneumatic rotational actuator.



MICRO HOPPER DISCHARGE
UHMW bearing on the micro hopper discharge end provides lubrication free and maintenance free operation.



24" ROTATING DRUM ABOVE FLOOR INSTALLATION

CMS-2000 STANDARD FEATURES:

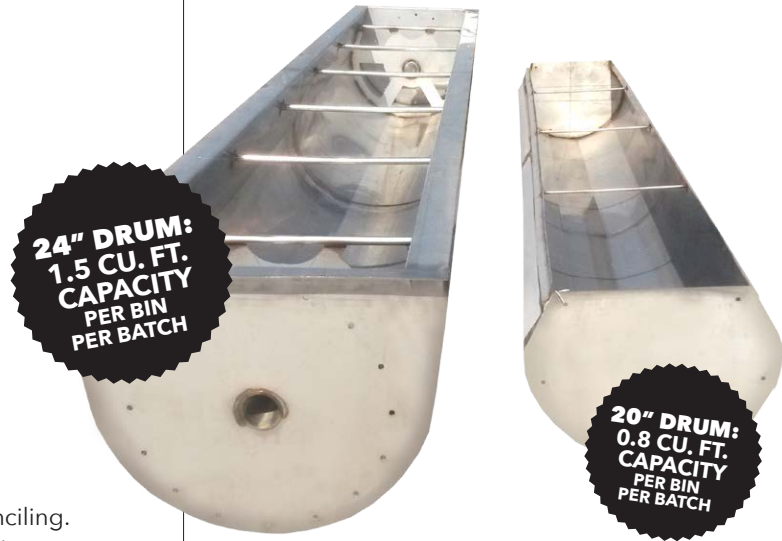
- Various bin sizes available - 3.0 cubic ft. (85 liters), 6.0 cubic ft. (170 liters), 8.0 cubic ft. (227 liters), and 10 cubic ft. (284 liters).
- Center walk-through aisle.
- Standard ¾ HP TEFC motors.
- Carbon steel frame with tough epoxy finish over durable primer.
- High accuracy NTEP approved "S" style loadcells and summing junction box.
- To minimize bridging the micro bins are designed with three vertical sides, chamfered corners, and a large conveyor discharge opening.
- 20:1 ratio gearboxes standard.
- English/metric measuring tape in each bin.
- Standard pneumatic rotating drum.

CMS-2000 OPTIONAL FEATURES

- 10:1 ratio gearbox and 5:1 ratio gearbox.
- 1 HP, 1.5 HP, 2 HP, and 3 HP motors.
- Hinged micro bin lids.
- NTEP certified scale system with certified scaling vessel.
- Individual bin dust collection hood.
- Individual bin interlock switch to be used in locking individual bins with hinged lids with solenoid release.
- Mechanical agitator for individual bins.
- Class II, Division I motors. (Explosion proof)
- Individual micro bin high/low level sensors for filling micro bins from another source.
- Three point individual FDA hoppers for inventor control or reconciling.
- Individual micro bin inlets for filling micro bins from a bulk container.
- Electrical rotating drum.

ROTATING DRUM:

- Rotating drum is enclosed in a stainless steel shroud. The shroud is bolt together for easy service.
- 20" (50.8 cm) Rotating drum is rotated with standard pneumatic actuator or optional electric motor with gearbox.
- 24" (61.0 cm) rotating drum is rotated with electric motor with gearbox. (Pneumatic not available)



LOSS-IN-WEIGHT MICRO SYSTEM

EFFICIENT, FAST & ACCURATE BATCHING

ALL INGREDIENTS ARE WEIGHED AND ADDED AUTOMATICALLY!

No drugs or additives are handled manually with the Loss-In-Weight system.

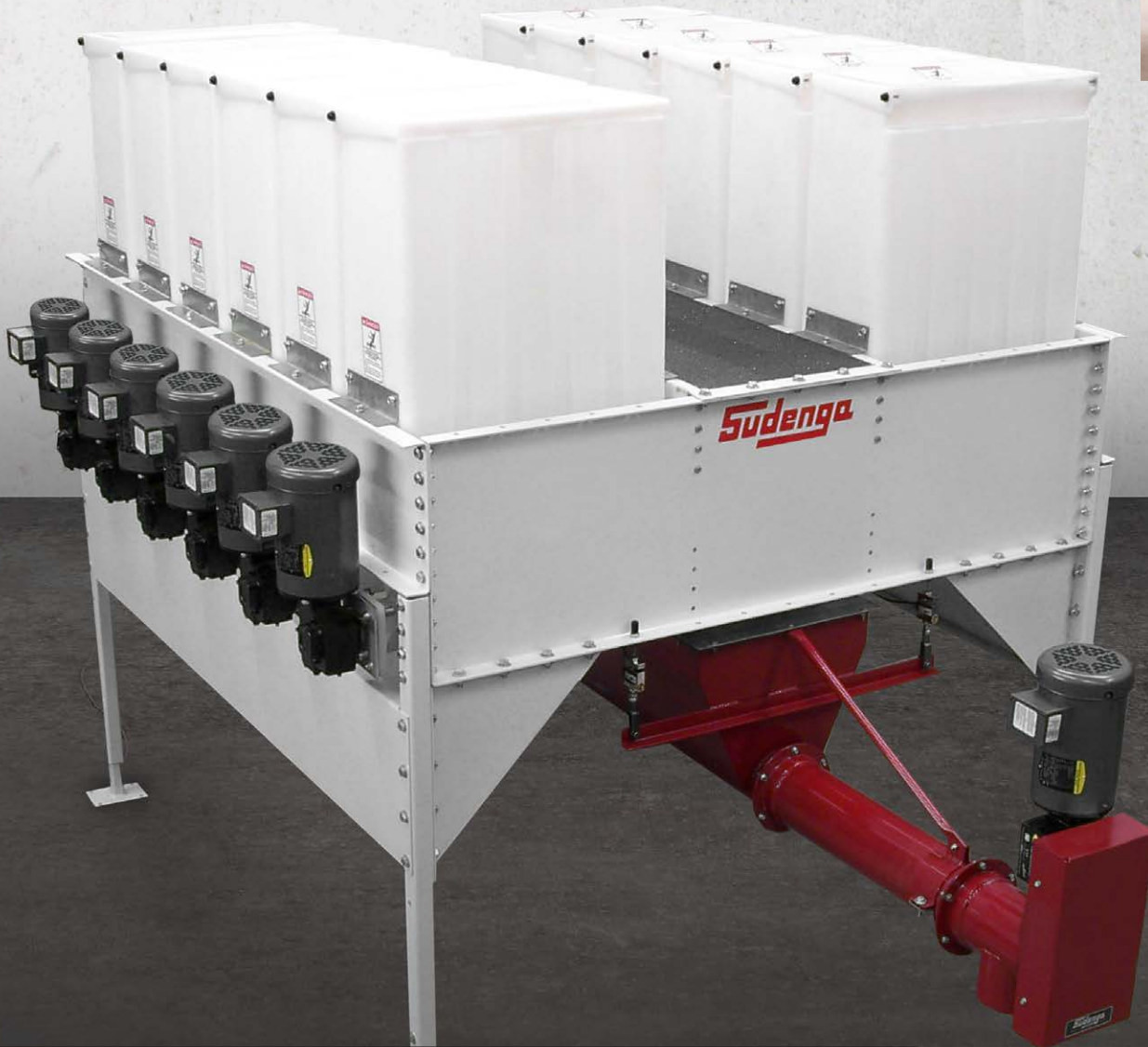
- **DECREASED BATCHING TIME** All ingredients are weighed and added simultaneously.
- **INVENTORY ACCURACY** Continuous inventory is monitored quickly, efficiently, and accurately.
- **LOWER INSTALLATION HEIGHT** Less space required than conventional micro systems.



Sudenga
INDUSTRIES, INC.

1-888-SUDENGA | 1-712-475-3301 | Fax: 1-712-475-3320
PO Box 8, 2002 Kingbird Ave., George, IA 51237 USA
sales@sudenga.com | www.sudenga.com

MICRO SKID SERIES-2000



STAINLESS STEEL FLUSH HOPPER

(GATE OPTIONAL)
reduces cross
contamination
between
formulations

**COST EFFECTIVE SOLUTIONS
FOR MICRO MANAGEMENT**

EASY INTEGRATION WITH EXISTING FEED MILL SYSTEMS



Four NTEP approved loadcells in tension
weighing with summing junction box.

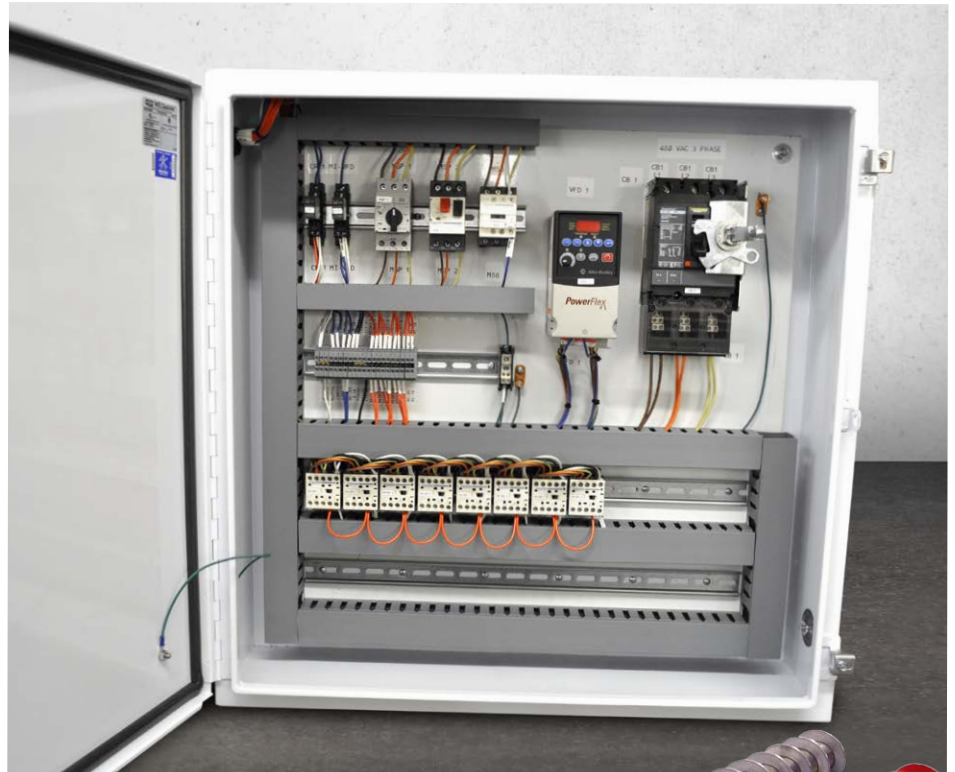
MICRO SKID SERIES-2000

STANDARD MICRO SKID FEATURES

- NTEP approved "S" style load cells
- Stainless steel flush hopper (gate optional) reduces cross contamination between formulations



- Ribbed poly bin for strength and rigidity. Available in poly or stainless steel. Sizes 3 cu. ft. (85 liters) or 6 cu. ft. (170 liters). Custom sizes available in stainless steel bins
- Maintenance free UHMW end bearings on micro hopper discharge auger
- Center walk-through aisles
- VFD controls for high and low speed motor settings
- Half pitch flighting in bin intake and double full pitch flighting on discharge end assures consistent material flow. Available in carbon or stainless steel



Micro motor control panel with VFD for two-speed motor controls.



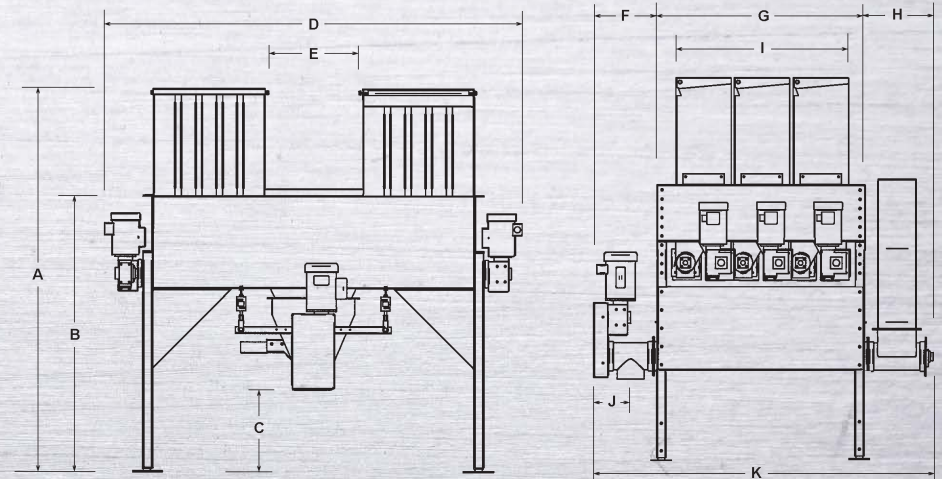
Maintenance free UHMW bearings



Half pitch flighting in bin intake and double full pitch flighting on discharge end.

SPECIFICATIONS

	Inches	Centimeters
A (min)	83 ³ / ₄	213
A (max)	93 ³ / ₄	238
B (min)	60 ¹ / ₄	153
B (max)	70 ¹ / ₄	178
C (min)	19 ¹ / ₂	50
C (max)	29 ¹ / ₂	75
D	91	231
E	21 ¹ / ₂	55
F	14 ¹ / ₄	36
G	45	114
H	14 ¹ / ₄	36
I	37	94
J	8 ¹ / ₂	22
K	74 ¹ / ₄	189



Skid length increases 12¹/₂" (32 cm) for each additional bin pair.



1-888-SUDENGA | 1-712-475-3301 | Fax: 1-712-475-3320
 PO Box 8, 2002 Kingbird Ave., George, IA 51237 USA
 sales@sudenga.com | www.sudenga.com