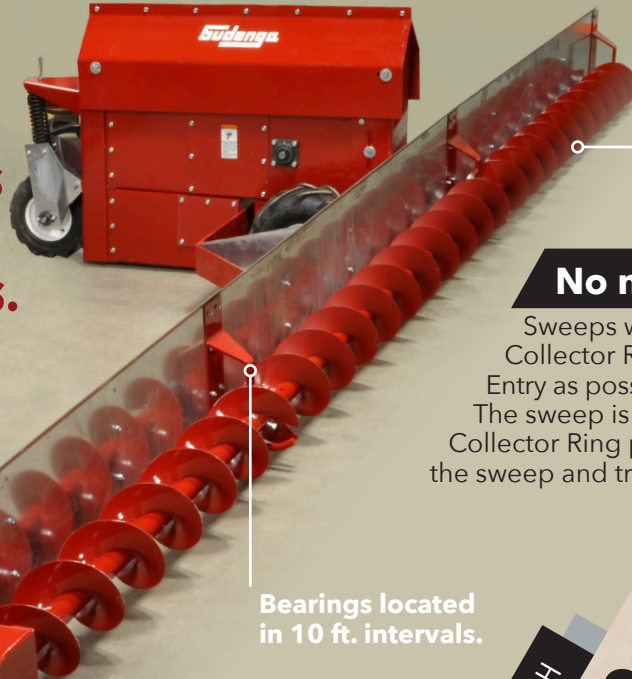
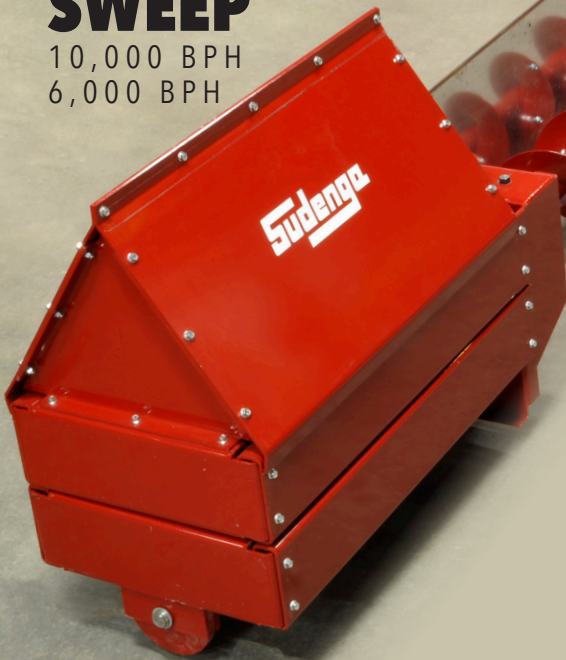


D100 / D150 SWEEP

A Zero-Entry sweep system that handles the extreme demands of commercial grain handling applications.

D150 SWEEP

10,000 BPH
6,000 BPH



The sweeps lead with the flighting for a "FULL-BITE" in tough, stubborn grain.

No need to enter the bin!

Sweeps with the Sudenga above-floor Collector Ring option are as close to Zero-Entry as possible in normal sweep operation. The sweep is permanently installed, and the Collector Ring provides permanent power to the sweep and tractor drives.

Available with
**Tractor Drive
or Trac-Drive**



6,000 BPH

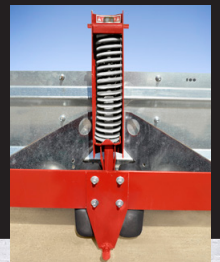
D100 SWEEP



Sweep Model	Flight Diameter	Capacity (dry corn)	Bin Diameter	Max. Bin Height
D100	11¼"	6,000 BPH	36-105 ft.	100 ft.
D150	11¼" & 16"	6,000/10,000 BPH	36-136 ft.	150 ft.

Other material capacities available on request.

The "D" Series Sweeps have spring-loaded suspensions that automatically, under grain weight, settle the system on skids to protect the sweep and bin floor when the bin is filled. When grain weight is removed, the springs raise the sweeps and tractors to operating height. The tractor carries the sweep during operation, ensuring proper sweep advancement.



D100 / D150 SWEEP FEATURES

BENEFITS OF "ZERO-ENTRY"

Grain engulfment in storage bins leads to more injuries and deaths than sweep entanglement. Some "zero-entry" sweeps require personnel to enter the bin to move grain and manually raise the sweep before it can be engaged. It is during this window, when grain is in its inverted cone state, that a serious risk of engulfment exists. D100 and D150 Sweeps are designed with a self-raising and lowering feature, eliminating the need for personnel to prep the sweep prior to filling or engagement.

Some "zero entry" sweeps require a power cord to be run into the bin. When D100/D150 sweeps are equipped with the Sudenga Above-Floor Collector Ring option, there is no reason to enter the bin as part of normal sweep operation. The sweep is permanently installed, and the Slip Ring provides a permanent source of power for the sweep and tractor drives. When the intermediate sumps have drained enough grain to uncover the sweep, the sweep is started and operated from outside the bin with Sudenga's Auto Advance panel.

Only normal sweep maintenance would require someone to enter the bin. Always follow grain management practices which ensure grain remains in good, free-flowing condition. Be sure proper guards are installed over any exposed floor intakes and always follow proper lock out/tag out procedures whenever working with, or around any equipment.

Tractor Drive - D150 Sweep



Tractor Drive - D100 Sweep



Trac Drive or Tractor Drive Options



Trac-Drive

Both drive types offer positive forward and reverse movement in grain. The drives rest on the bin floor under grain weight and self-raise for operation as the gates remove grain over and around them. No need to enter the bin to prep the sweep.

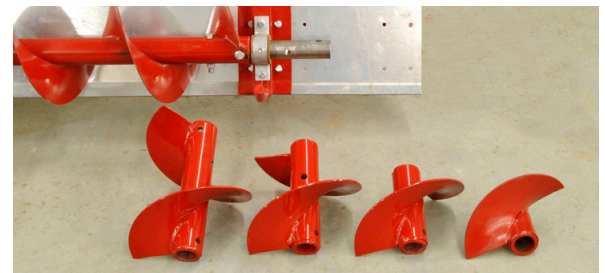
The weight of the sweep and backshield are carried by the tractor for maximum traction. No need for dryer floor reinforcement track.

SWEEPS AVAILABLE IN ELECTRIC OR HYDRAULIC DRIVE FORMATS



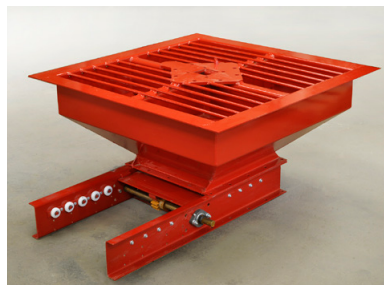
Clean Sweep

Clean Sweep is standard on all Sweeps. Nylon bristles contact the floor, dramatically reducing the amount of manual sweeping required after bin unloading.



Sweep Extensions

Four sweep extensions and backshields are supplied to allow 3" to 21" of sweep extension in 3" increments. The sweep length is adjusted after installation to make the shortest sweep-to-wall gap in bins that are out of round or have off-center sweep pivots.

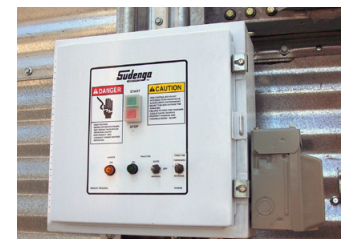


Mounting the electrical collector ring above the floor means less space is required under the floor for the center sump. Sump depth is only 16".

US PATENT NO. 8,616,823

Auto Advance

Auto Advance controls sweep movement by monitoring the sweep motor amperage. When excessive amperage is detected, the Auto Advance stops the Sweep Drive. When enough grain is carried away to lower the amperage, the Drive unit restarts. A reverse feature senses grain avalanches and backs the sweep up.



Sudenga
INDUSTRIES, INC.

1-888-SUDENGA | 1-712-475-3301 | Fax: 1-712-475-3320
PO Box 8, 2002 Kingbird Ave., George, IA 51237 USA
sales@sudenga.com | www.sudenga.com