

FEED EQUIPMENT  
**MICRO SYSTEMS**

Commercial and standard duty micro ingredient systems provide accuracy to within two one-hundredths of a pound. Systems offer a VFD drive with PLC interface. Up to 24 six-cubic-foot hoppers available in any configuration to fit the application.

**Sudenga**<sup>®</sup>  
**INDUSTRIES, INC.** **CMS-2020**



- Only NTEP lab certified gain-in-weight system in the country
  - Easy integration with existing feed mill systems
- Cost effective solutions for micro ingredient management
  - Various bin sizes available -  
3.0 cubic ft. (85 liters), 6.0 cubic ft. (170 liters),  
8.0 cubic ft. (227 liters), and 10 cubic ft. (284 liters).

Learn more  
or get a quote



1-888-SUDENGA | 1-712-475-3301 | Fax: 1-712-475-3320  
PO Box 8, 2002 Kingbird Ave., George, IA 51237 USA  
sales@sudenga.com | www.sudenga.com

# COMMERCIAL MICRO SKID CMS-2020



Shown with optional hollow bore gear box

## MICRO HOPPER DRIVE ASSEMBLY

Robust right angle gearbox/motor assembly can be rotated in either the up or down position. With four bolts the auger, gearbox, and motor can easily be removed. The gearbox/motor assembly is available in a variety of motor HP's and gearbox ratio's to fit your needs.



## ELECTRIC ROTATING DRUM

The gearbox/electric motor drive assembly is much smoother and more reliable than the tradition pneumatic rotational actuator.

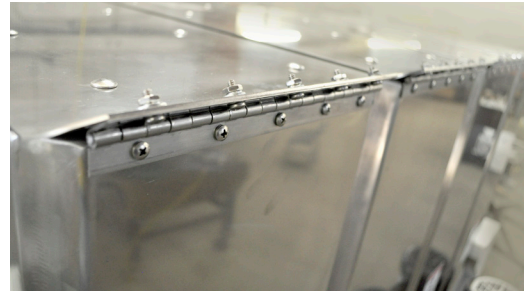


## DISCHARGE SEAL

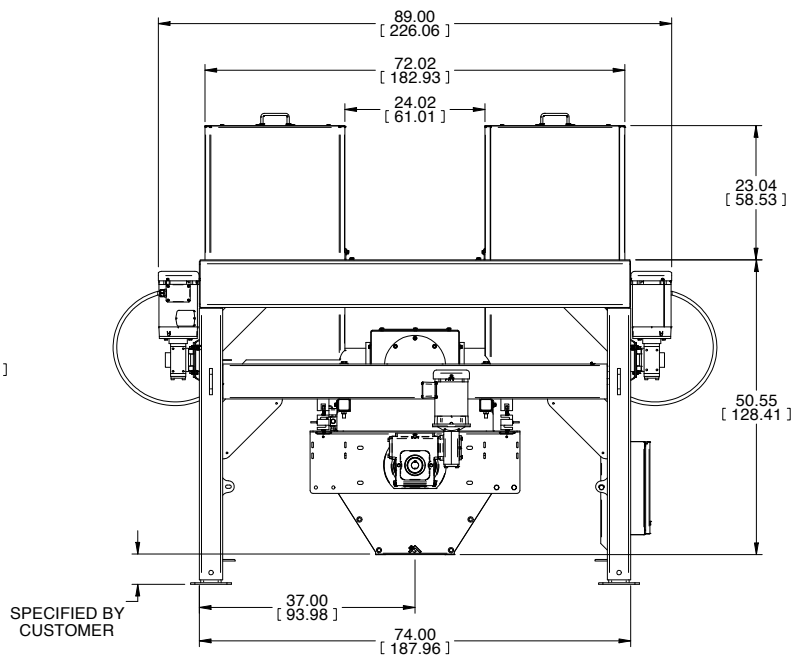
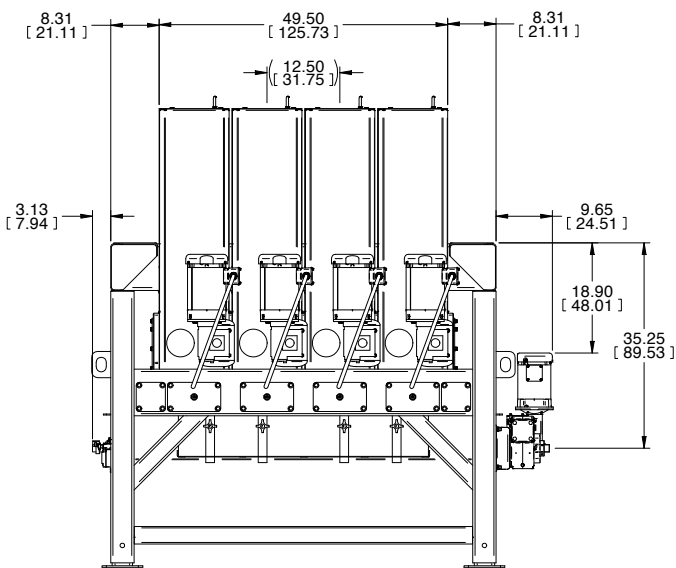
Side discharge with donut seal into rotating drum shroud. Reduces dust leakage from discharge connection.

## OPTIONAL HINGED MICRO HOPPER LIDS

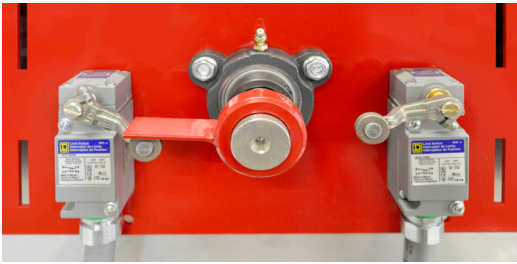
For fast easy access for filling micro hoppers. Eliminates the misplacing of lids.



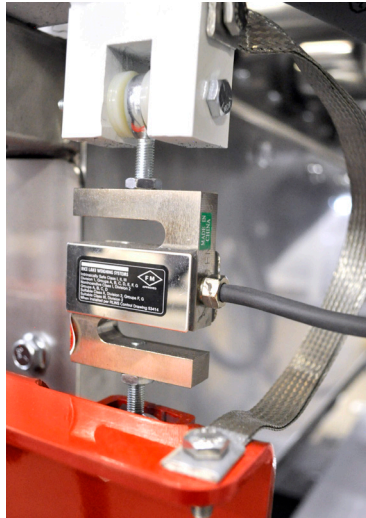
## SPECIFICATIONS (20" rotating drum above floor installation)



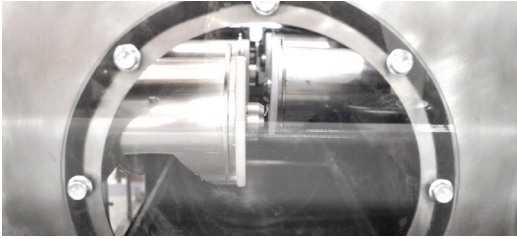




**ROTATIONAL LIMIT SWITCHES**  
Ensure proper position feedback to the batch controller.



**LOADCELLS**  
Sudenga's commercial micro skids feature four NTEP approved loadcells for accurate weighing.



**MICRO HOPPER DISCHARGE**  
UHMW bearing on the micro hopper discharge end provides lubrication free and maintenance free operation.

**ROTATING DRUM:**

- Rotating drum is enclosed in a stainless steel shroud. The shroud is bolt together for easy service.
- 20" (50.8 cm) Rotating drum is rotated with standard pneumatic actuator or optional electric motor with gearbox.
- 24" (61.0 cm) rotating drum is rotated with electric motor with gearbox. (Pneumatic not available)



**24" DRUM:**  
1.5 CU. FT. CAPACITY  
PER BIN PER BATCH



**INVENTORY MANAGEMENT SYSTEM (SIMS)**  
A quick and easy way to ensure that your micro ingredients are loaded into the appropriate micro hopper on your micro ingredient system. Now available for all micro ingredient systems.



## COMPANION EQUIPMENT



**MIXER / SURGE HOPPER**  
Increase capacity with a surge hopper along with optional weigh hopper for higher tonnage per hour capacity.



**CBX BATCH CONTROLLERS**  
Automate an entire feed processing system all the way from grinding, to mixing, and inclusion of micro ingredients.



**MOTOR CONTROL PANELS**  
Sudenga motor control panels allow for integration and automation of your entire feedmill operation.



**ROLLER MILL**  
Sudenga's Roller Mill is available in single, double, and triple pair high setups with capacities up to 48 TPH at 500 microns.



View Sudenga's complete line of feed equipment at [sudenga.com/feed](http://sudenga.com/feed)

FEED EQUIPMENT  
**MICRO SYSTEMS**

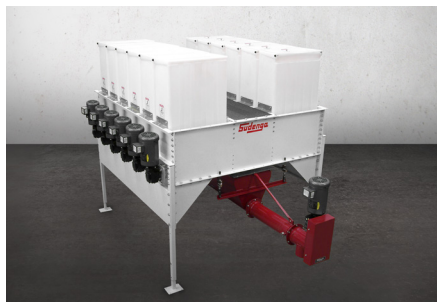
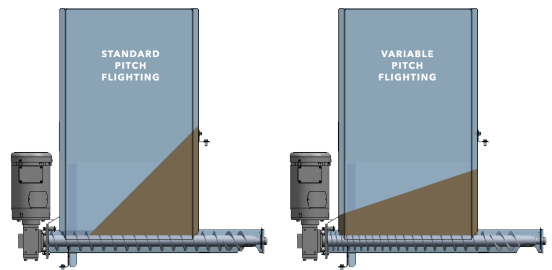
**CMS-2020** COMMERCIAL MICRO SKID

**STANDARD:**

- Various bin sizes available - 3.0 cubic ft. (85 liters), 6.0 cubic ft. (170 liters), 8.0 cubic ft. (227 liters), and 10 cubic ft. (284 liters).
- Center walk-through aisle.
- Standard ¾ HP TEFC motors.
- Carbon steel frame with tough epoxy finish over durable primer.
- High accuracy NTEP approved "S" style loadcells and summing junction box.
- To minimize bridging the micro bins are designed with three vertical sides, chamfered corners, and a large conveyor discharge opening.
- 20:1 ratio gearboxes standard.
- English/metric measuring tape in each bin.
- Standard pneumatic rotating drum.

**OPTIONS:**

- 10:1 ratio gearbox and 5:1 ratio gearbox.
- 1 HP, 1.5 HP, 2 HP, and 3 HP motors.
- Hinged micro bin lids.
- NTEP certified scale system with certified scaling vessel.
- Individual bin dust collection hood.
- Individual bin interlock switch to be used in locking individual bins with hinged lids with solenoid release.
- Mechanical agitator for individual bins.
- Class II, Division I motors. (Explosion proof)
- Individual micro bin high/low level sensors for filling micro bins from another source.
- Three point individual FDA hoppers for inventor control or reconciling.
- Individual micro bin inlets for filling micro bins from a bulk container.
- Electrical rotating drum.



**S-2000**  
STANDARD MICRO SKID

- Gain-In-Weight System
- Cost effective solutions For micro management
- Easy integration with existing feed mill systems



**CMS-4020**  
COMMERCIAL MICRO SKID

- Scaled Bucket Systems
- Micro skid system with computerized traveling scale for weighting micro ingredients



**LOSS-IN-WEIGHT**  
COMMERCIAL MICRO SKID

- Efficient, fast & accurate batching
- All ingredients are weighed and added automatically

1-888-SUDENGA | 1-712-475-3301 | Fax: 1-712-475-3320  
 PO Box 8, 2002 Kingbird Ave., George, IA 51237 USA  
 sales@sudenga.com | www.sudenga.com

